



Data for three-month period 1 July - 30 September 2020

Issued March 2021

The quarterly performance snapshots show lost time and restricted work injury and incident data provided to the Department by the minerals sector for a three-month period. The snapshots can be used by employers and workers to assist in the development and promotion of safe work practices on mining operations.

For more information about injuries and incidents in the minerals sector, visit our website www.dmirs.wa.gov.au

@DMIRS_WA

Department of Mines, Industry Regulation and Safety

Injuries by age

Age range with the **greatest percentage** of injuries was **30-39 years (26%)**

30-39 years



Age range 50-59 were 2nd highest (23%)

Injuries by severity



1
fatal injury

See *Mines Safety* significant incident report no. 283



283
serious injuries

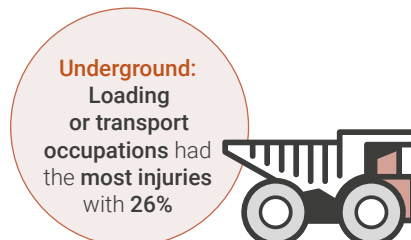


50
minor injuries

Injuries by occupation



Processing plant occupations were 2nd highest with 16%



Long hole drill and blast, and services occupations were 2nd highest with 19% each

Injuries by location

10%



Surface: Bench area (not haul road) had the **highest percentage of injuries**

Crushing, screening or conveyor had the 2nd highest with 9%



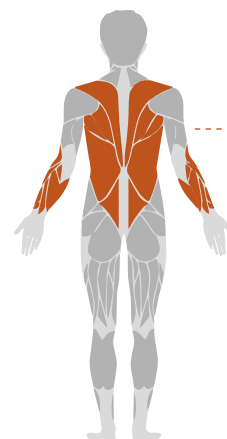
Underground: Production and development areas had the **highest percentage of injuries**

Underground access or haulage ways had the 2nd highest with 21%

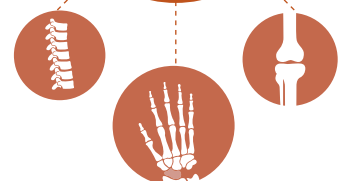
Injury frequency rate for top 5 commodities (number of injuries per million hours worked)



Injuries by nature



78%
of injuries were **musculoskeletal disorders**

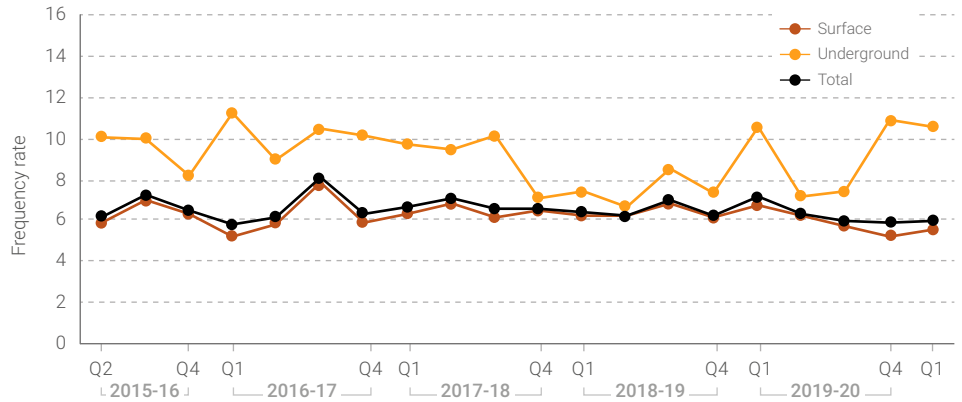


Superficial injuries were 2nd highest with 19%

Injury frequency rate (number of injuries per million hours worked)

The overall injury frequency rate increased from 5.9 in the April to June quarter to 6 this quarter.

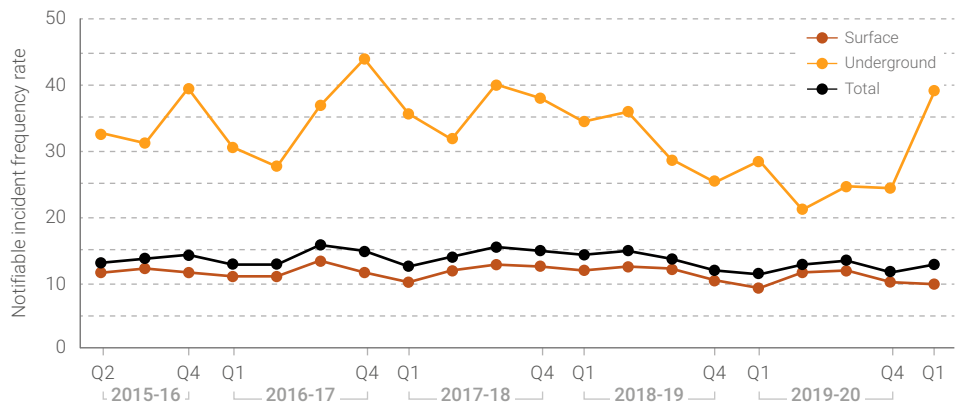
Make sure you can recognise the hazards associated with your workplace and the work you do, understand the risks, and know how to implement the control measures.



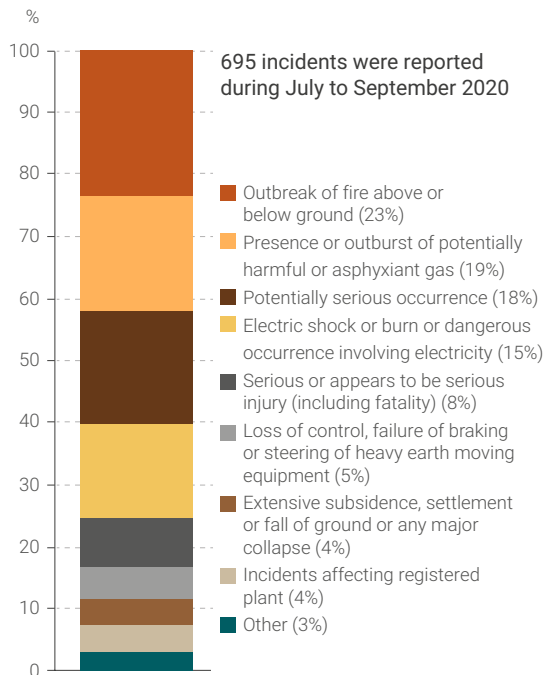
Notifiable incidents frequency rate (number of incidents per million hours worked)

Specific types of incidents, including near misses, are required to be reported to the Department. This reporting is important to identify trends and clusters of incidents that need to be addressed to help prevent injuries.

What is the reporting culture like at your site?



Notifiable incidents by reporting category



Amputation, fracture and crush injuries in comparison to all reported injuries

